

**LA CORNUE**

---

# La Cornue Hood Users Guide

Château Line

---



USA & Canada

# CONTENTS

	Pages
WARNINGS .....	3
INSTRUCTIONS FOR USE.....	4
1. Control Panel.....	4
2. Remote Control (option).....	5
MAINTENANCE AND CLEANING .....	5
1. Filters.....	5
2. Lighting .....	6

Dear customer,

Thank you for choosing a La Cornue extractor hood.

The aim of this guide is to familiarise you with the potential of a professional-quality appliance designed for domestic use, and to facilitate its upkeep.

Above all, a La Cornue hood is manufactured from noble and pure materials. The specific choices for these materials, such as brass or stainless steel, correspond to technicality and professional performance requirements that are not attainable with other materials or protective treatments. We are very much attached to the authenticity of our appliances and we are convinced that you will appreciate them even more as you use them.

Thank you for placing your trust in us.

*Xavier Dupuy*

President

All of the characteristics are provided for information purposes only. With the aim of constantly improving its production quality, La Cornue may make modifications to its appliances in line technological developments.

# WARNINGS

**Read the guides before installing and using this appliance.**

**We decline any responsibility for damage or fires caused by the device if the installation and user guides are not observed.**

Keep these guides with your device. If the device has to be sold or transferred, the new user shall be informed of its operation and any important warnings.

This device may not be used by children or disabled persons without the presence of an adult.

Never blaze food under the hood or leave a gas burner alight without a container. Any flames entering the hood may damage the filters and cause a fire.

Frying food must be monitored attentively. Overheated oils and greases can catch fire.

Clean the appliance regularly according to the indications given in the "Maintenance and Cleaning" chapter.

**Always adapt the aspiration rate to the type of cooking. It is not always necessary to set the hood to maximum power.** Use the maximum power when cooking chips or grilled meats, but minimum or medium power will suffice for stews.

When you are cooking food that releases a lot of steam and smoke (grill meats...), remember to switch on the hood 5 minutes before you start cooking and let it run for 5 minutes after you are finished cooking.

**CAUTION-**Only for units intended for use with Remote Blowers-To Reduce The Risk Of Fire And Electric Shock, Install This Range hood Only With Remote Blower Models EBI600 or EBI1200 Rated Maximum a 7.5 A

## IMPORTANT SAFETY INSTRUCTIONS

**WARNING: TO REDUCE THE RISK OF FIRE, ELECTRIC SHOCK, OR INJURY TO PERSONS, OBSERVE THE FOLLOWING:**

- Use this unit only in the manner intended by the manufacturer. If you have questions, contact the manufacturer.
- Before servicing or cleaning the unit, switch power off at service panel and lock the service disconnecting means to prevent power from being switched on accidentally. When the service disconnecting means cannot be locked, securely fasten a prominent warning device, such as a tag, to the service panel.
- Installation work and electrical wiring must be done by qualified person(s) in accordance with all applicable codes and standards, including fire-rated construction.
- Do not operate any fan with a damaged cord or plug. Discard fan or return to an authorized service facility for examination and/or repair.
- Sufficient air is needed for proper combustion and exhausting of gases through the flue (chimney) of fuel burning equipment to prevent backdrafting. Follow the heating equipment manufacturer's guideline and safety standards such as those published by the National Fire Protection Association (NFPA), the American Society for Heating, Refrigeration and Air Conditioning Engineers (ASHRAE), and the local code authorities.
- When cutting or drilling into wall or ceiling; do not damage electrical wiring and other hidden utilities
- Ducted fans must always be vented outdoors.

**CAUTION:** For general ventilating use only. Do not use to exhaust hazardous or explosive materials and vapors.

**CAUTION:** To reduce risk of fire and to properly exhaust air, be sure to duct air outside - do not vent exhaust air into spaces within walls or ceilings, attics or into crawl spaces, or garages.

**WARNING: TO REDUCE THE RISK OF FIRE, USE ONLY METAL DUCTWORK.**

**WARNING: TO REDUCE THE RISK OF A RANGE TOP GREASE FIRE:**

- Never leave surface units unattended at high settings. Boilovers cause smoking and greasy spillovers that may ignite. Heat oils slowly on low or medium settings.
- Always turn hood ON when cooking at high heat or when flambeing food (i.e. Crepes Suzette, Cherries Jubilee, Peppercorn Beef Flambe).
- Clean ventilating fans frequently. Grease should not be allowed to accumulate on fan or filter.
- Use proper pan size. Always use cookware appropriate for the size of the surface element.

**WARNING: TO REDUCE THE RISK OF INJURY TO PERSONS IN THE EVENT OF A RANGE TOP GREASE FIRE, OBSERVE THE FOLLOWING:-**

- **SMOTHER FLAMES** with a close fitting lid, cookie sheet, or metal tray, then turn off the burner. **BE CAREFUL TO PREVENT BURNS.** If the flames do not go out immediately, **EVACUATE AND CALL THE FIRE DEPARTMENT.**
- **NEVER PICK UP A FLAMING PAN** - you may be burned.
- **DO NOT USE WATER**, including wet dishcloths or towels - a violent steam explosion will result.
- Use an extinguisher **ONLY** if:
  - You know you have a class ABC extinguisher, and you already know how to operate it.
  - The fire is small and contained in the area where it started.
  - The fire department is being called.
  - You can fight the fire with your back to an exit.

\*Based on "Kitchen Fire Safety Tips" published by NFPA.

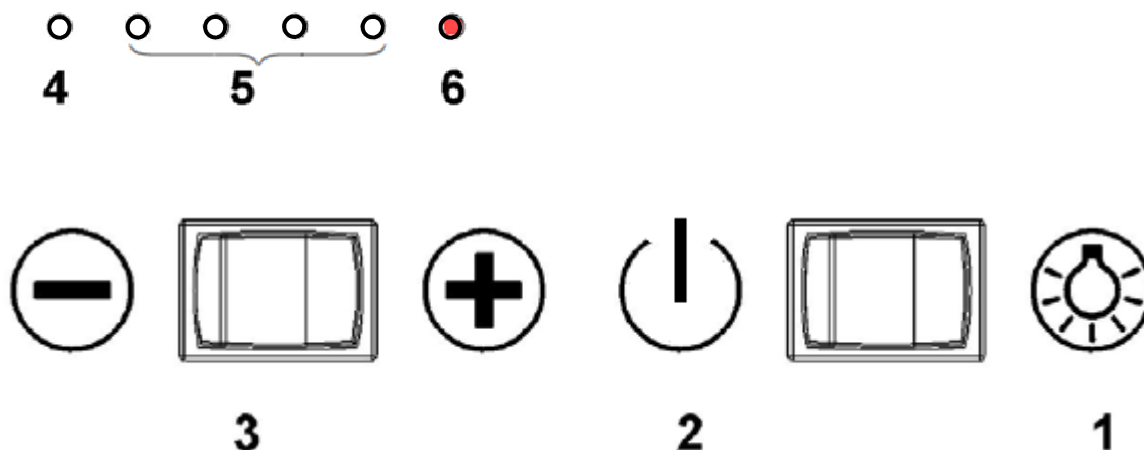
- **WARNING:** To reduce the risk of fire or electrical shock, do not use this fan with any solid-state speed control device.

## READ AND SAVE THESE INSTRUCTIONS

# INSTRUCTIONS FOR USE

## 1. CONTROL PANEL

La Cornue hoods are equipped with a control panel with an electronic regulator for adjusting the aspiration rate.



1. Light ON/OFF button, long push dims light.
2. Motor ON/OFF button, long push starts delayed ventilation for 15 min.
3. Aspiration power setting button.

- Operation Indicators

4. Motor indicator (white LED)
5. Aspirations power level (white LED)
6. Grease filter indicator (red LED)

To switch on the motor, press the button (2); the motor starts at with 3/4 of its maximum power. The first 4 white LEDs light up.

You can choose a lower or higher power setting with power setting button (3). If you press the right side of the power setting button (3), you increase the ventilation power indicated by the white LEDs (5). If you press the left side of the button (3), you reduce the power. You can stop the blower at any level by pressing button (2) again.

If you press the button (2) for 4 sec. delayed ventilation is started for 15 min. The delayed ventilation will stop automatically after 15 min and the green LEDs switch off.

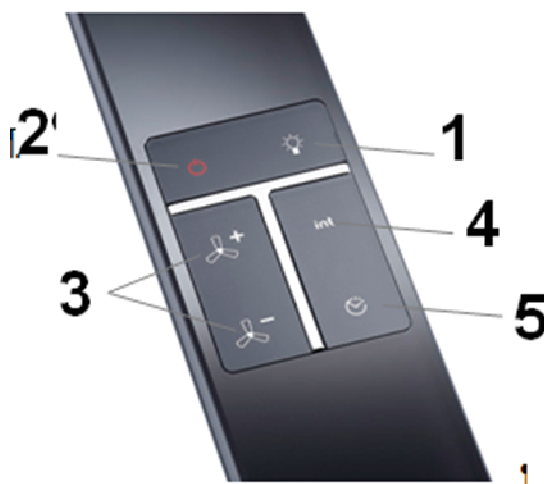
The grease filter indicator is flashing red after 20 motor hours or after 14 days. The grease filter time is re-set by a long push button (2) when the hood is off.

# INSTRUCTIONS FOR USE

## 2. REMOTE CONTROL

The hood functions and the motor power can be controlled by a remote.

The remote-control buttons provide you with the same operating functions as the control panel.



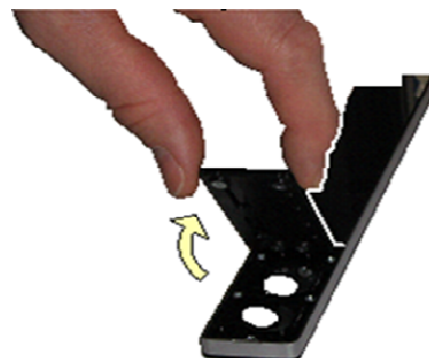
- Button **1**      Light ON/OFF button, long push dims light
- Button **2**      Motor ON/OFF button, long push starts delayed ventilation for 15 min
- Button **3**      Aspiration power setting button
- Button **4**      Boost button
- Button **5**      Delayed ventilation

To switch on the motor, press the button (2); the motor starts at with 2/3 of its maximum power. The first 4 white LEDs light up. You can choose a lower or higher power setting with power setting button (3). If you press the upper side of the power setting button (3), you increase the ventilation power. If you press the lower side of the button (3), you reduce the power.

By pressing boost button (4) the hood works for 5 min with full power. After this time the hood automatically step down to level 3.

If you press the button (5) delayed ventilation is started for 15 min. The delayed ventilation will stop automatically after 15 min and the white LEDs switch off.

Only use 2 CR2032 batteries



## 1. Filter

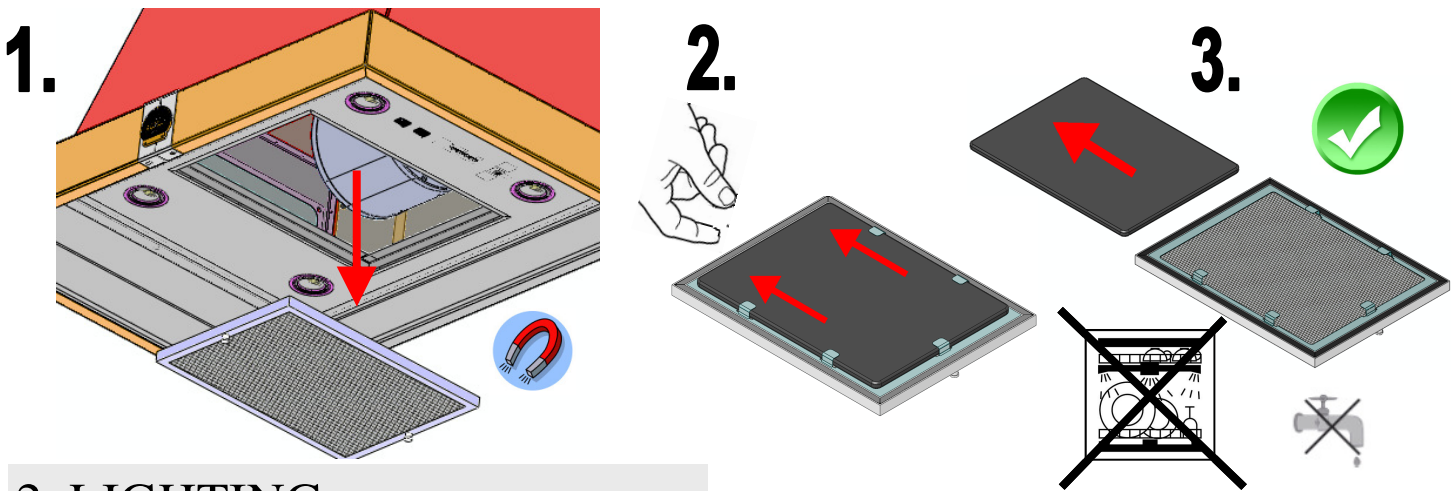
# MAINTENANCE AND CLEANING

## 1. Filter

The filters can be washed in the dishwasher every 2 or 4 weeks, depending on the frequency of use. The hood ceiling should be degreased from time to time with white spirit on kitchen roll; it is preferable to perform this operation with the windows open. We would like to remind you that your cooker will not become dirty as quickly if you switch on your hood as soon as you start cooking.

### Charcoal Filters—For Non - Vented (recirculating) Installations

**Note:** After approximately 1 year of use the charcoal filter should be replaced. Please Contact authorized retailer To order a replacement Charcoal Filter Kit. (Recycling Kit Type G1)

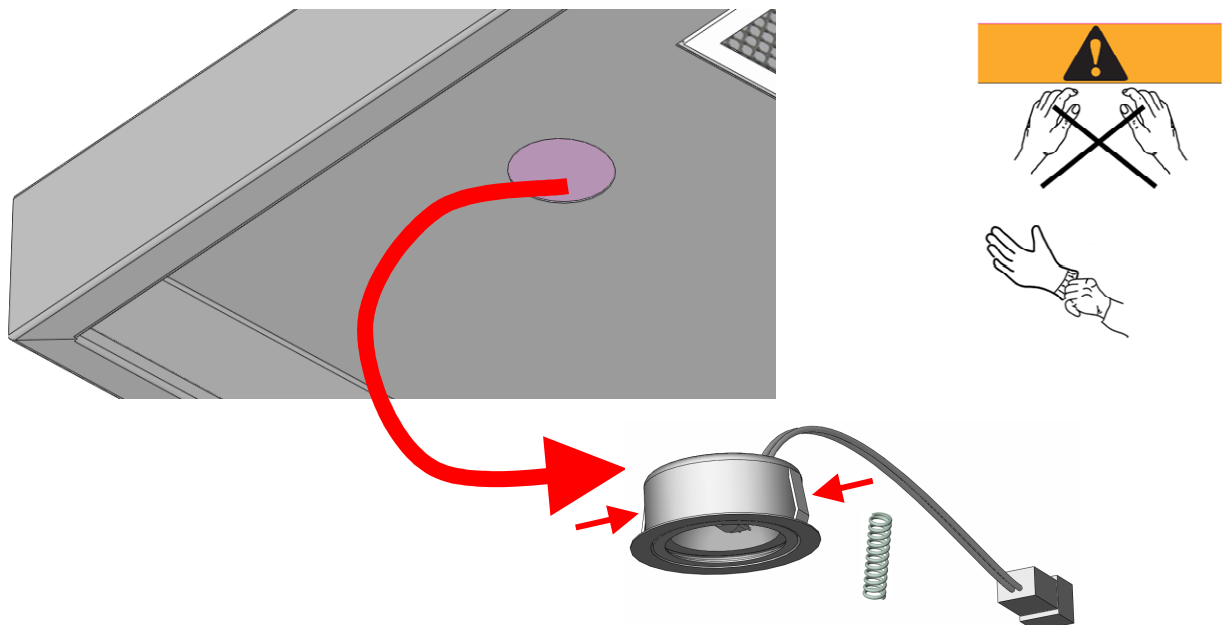


## 2. LIGHTING

Please note: Once one of the LED lamp does not work anymore in the hood, this must be replaced with a new one. Remove the defective LED spotlight down from the hood, in this case the two springs on the LED spotlight so that the LED spotlight fits down through the opening, then remove the electrical connector. Please contact authorized retailer for LED purchase.

Replace the defective LED spotlight with a new one Installation is in the reverse order.

To Replace LED Please Contact Authorized After Sales Service





# CLEANING AND CARE

## 5. Environmental Information

### **Disposal**

#### ***Packaging***

The packaging for the extractor hood is recyclable. Cardboard and polyethylene film (PE) are used as packaging materials. These materials must be disposed of in an environmentally compatible manner in accordance with local regulations.



#### ***Extractor hood***

Your local authority will also be happy to advise you on the environmentally sound disposal of old household appliances.

### **Environmental information**

All models manufactured by La Cornue are identified in accordance with waste electrical and electronic equipment (WEEE).

Please ask your dealer for information about current disposal methods. We reserve the right to make technical changes.









# **LA CORNUE**

---

## **Ateliers La Cornue**

14, rue du Bois du Pont - Z.I. les Béthunes - 95310 Saint-Ouen-l'Aumône  
FRANCE

Postal address / Adresse postale:

La Cornue SAS - B.P. 99006 - 95070 Cergy-Pontoise Cedex - FRANCE

Phone / Tél.: +33 (0)1 34 48 36 36 – Fax: +33 (0)1 34 64 32 65

E-mail: [a.table@la-cornue.com](mailto:a.table@la-cornue.com)

**[www.lacornue.com](http://www.lacornue.com)**

